

Sonata Quarta

Philipp Heinrich Erlebach (1657-1714)

Grave

7 6 6 3 6 5 3 6 6 5 #6 6 #4

8 Vivace

6 # 6 6 #6 # 6 6 6 # 5 6 7 6 5 3 #4 6

14

7 #6 6 # # 4 2 #4 2 6 7 6 7 6 7 3 4 6

20

#4 6 7 6 7 6 5 # 6 7 7 3 4 6 3 4 6 5 6 7 6 7 6 # 6

27

7 6 4 # 6 6 7 7 #4 6 7 #6 5

32

2 6 4 2 6 7 6 7 6 6 5 # 4 2 4 2 6 7 6 7 6 6

38

7 6 7 6 7 6 7 6 7 # 6 7 6 5 # b5

44

7 # 4 2 4 2 6 7 6 7 # 6 5 # 4 2 6 #4 2 6 5 4 #

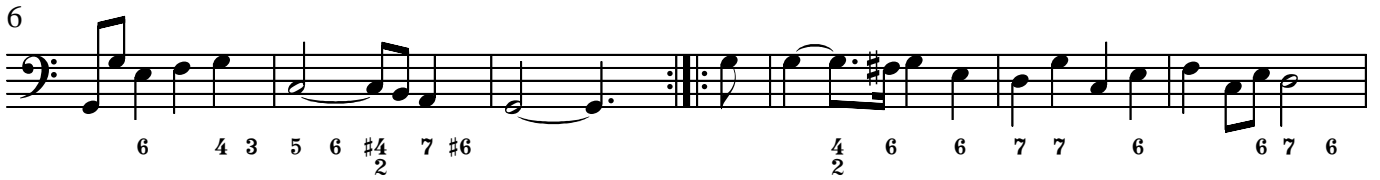
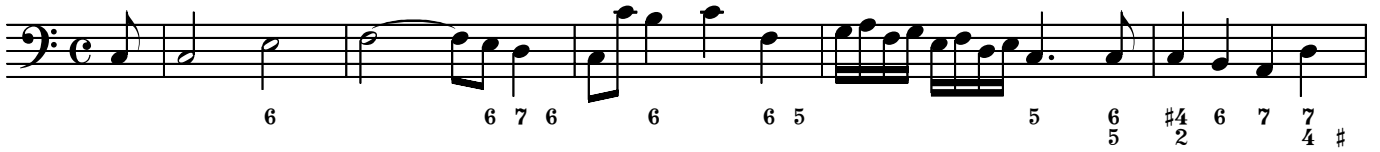
50

6 7 6 7 6 6 5 Tasto solo

55 Adagio

#4 6 #4 6 7 6 6 6 5 6 5 3 4 4 3

Allemande Grave



Courante



Sarabande

5 6 5 6 5 3 6 6 b5 6 6 7 #6

1. 2.

9

6 6 # 6 6 5 # 5 6 6 b5 6 6 5

17 **Variatio**

5 6 5 6 4 3 6 6 b5 #4 6 7 #6

1. 2.

25

6 6 # 6 6 # 6 b5 6 6

Gigue Prestò

6 7 #4 6 6 7 #4 6

6

4 6 5 6 6 7 7 6 7 #6 6 7 #4 6

2

11

4 6 6 # 6 5 6 5 #

2 (p) f

17

6 6 6 6 6 6 6

(p) f

23

6 3 #4 6 7 #6 6 3 4 6 6 5 6 3 4 6 6 7 6 6 6 7

30

p f 6 6 7 5 6 5 3 6 5 4 3 f

4 3 4